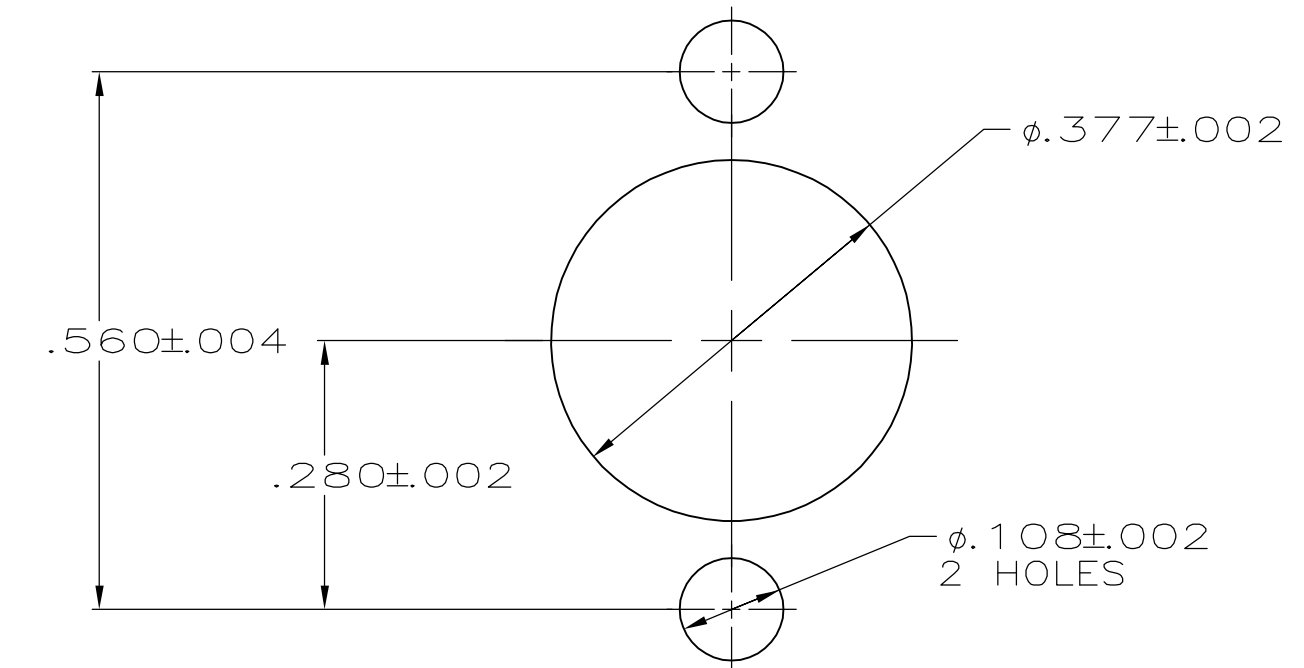
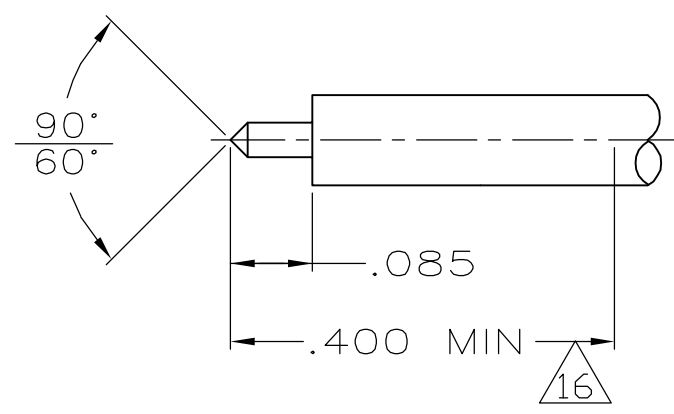
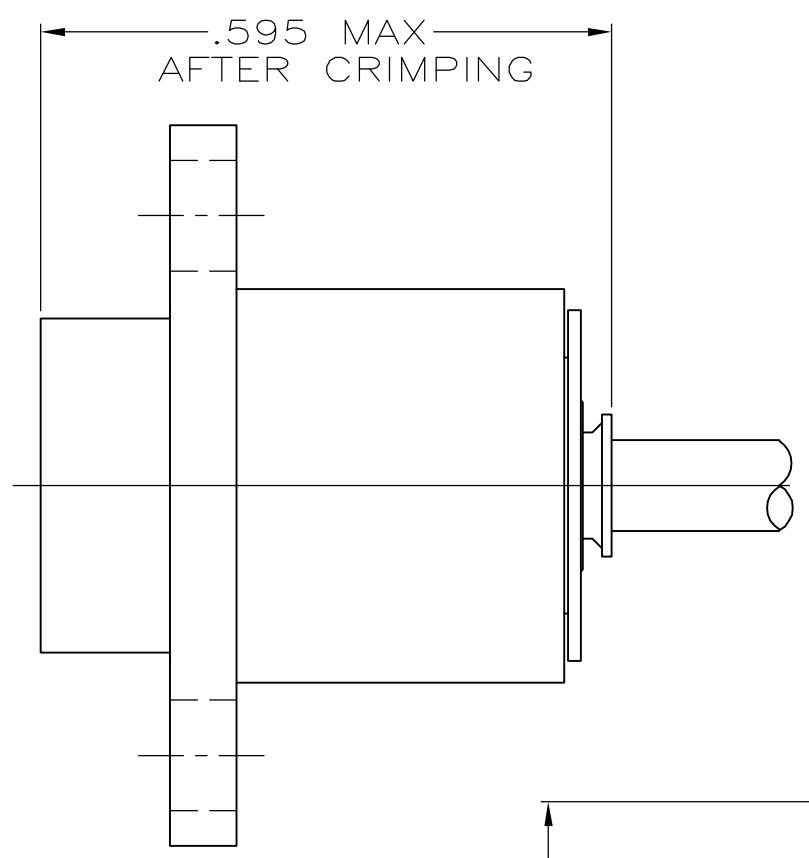
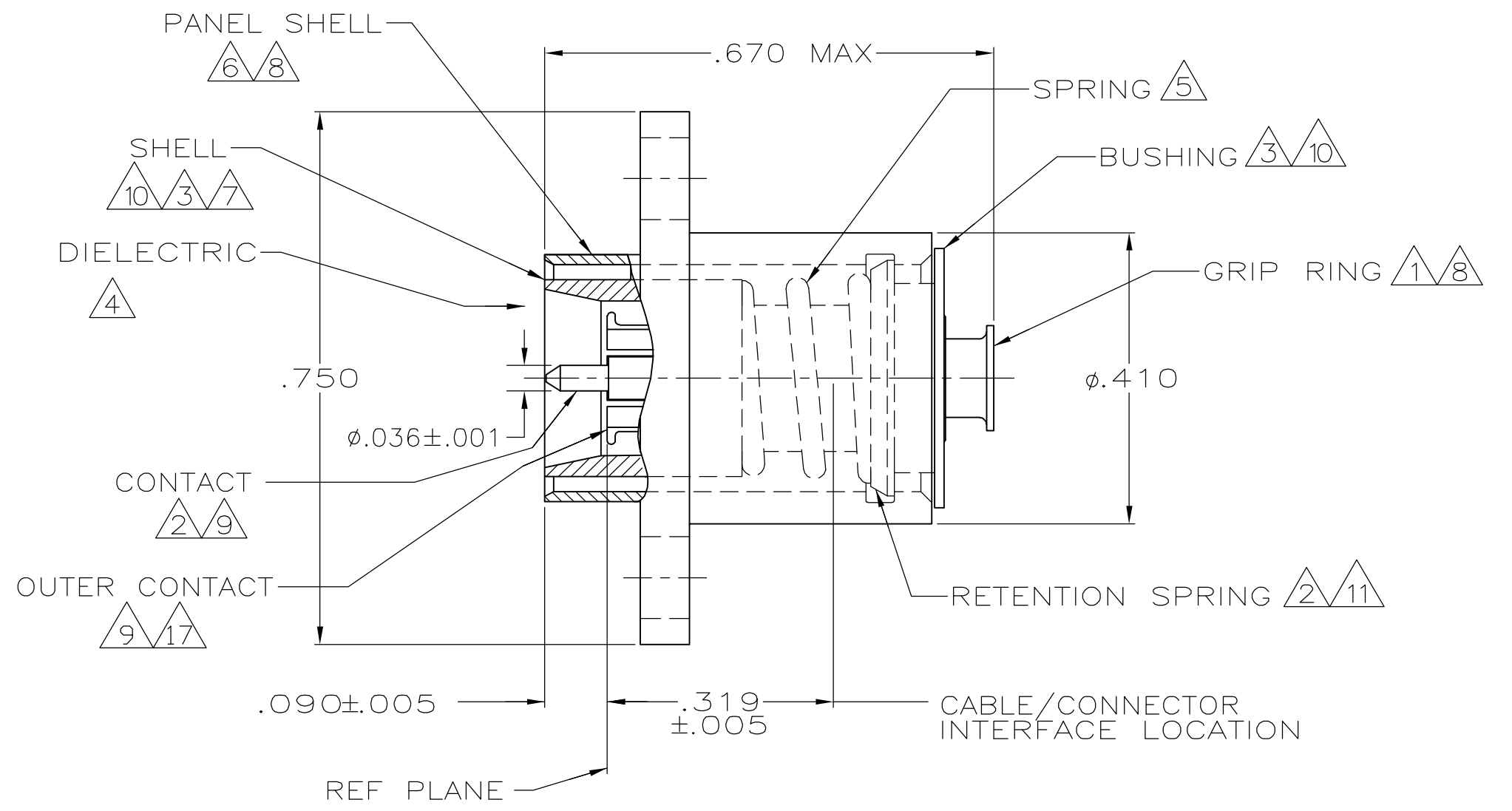


THIS DRAWING IS UNPUBLISHED. RELEASED FOR PUBLICATION
 © COPYRIGHT BY TYCO ELECTRONICS CORPORATION. ALL RIGHTS RESERVED.

LOC	DIST	REVISIONS					
AJ	16	P	LTR	DESCRIPTION	DATE	DWN	APVD
		0		REV PER EC-0S14-0496-04	31JAN2005	AF	JGH



- 1 BRASS PER MIL-C-50
- 2 BERYLLIUM COPPER PER QQ-C-530
- 3 STAINLESS STEEL PER ASTM-A-582
- 4 PTFE PER MIL-P-19468
- 5 STEEL WIRE PER QQ-W-470
- 6 BRASS PER QQ-B-626
- 7 SEALANT
- 8 NICKEL PL PER QQ-N-290
- 9 GOLD PL PER MIL-G-45204
- 10 PASSIVATION PER QQ-P-35
- 11 TIN PL PER ASTM-B-545
- 12. FOR USE WITH: RG-402, .141 SEMI-RIGID CABLE
- 13. USE CRIMPING TOOL: 59980-1
- 14. .190 MAX PANEL THICKNESS
- 15. .060 MAX FLOAT PERMITTED DUE TO INTERNAL SPRING
- 16 STRAIGHT CABLE REQUIRED TO APPLY CONNECTOR
- 17 BOILLAT B05 PER UNS 53800.

RECOMMENDED STRIP LENGTH

RECOMMENDED MOUNTING HOLES

5222200-1
 PART NUMBER

THIS DRAWING IS A CONTROLLED DOCUMENT.		DWN A. FERNANDEZ-DOCK5 31JAN2005	Tyco Electronics Corporation Harrisburg, PA 17105-3608	
DIMENSIONS: inches		CHK J. HAVENER 31JAN2005	NAME PLUG,PANEL,BMA MOUNT BLIND MATE 3.5mm	
TOLERANCES UNLESS OTHERWISE SPECIFIED:		APVD J. HAVENER 31JAN2005	PRODUCT SPEC 108-12106	
0 PLC ± -	1 PLC ± -	APPLICATION SPEC	SIZE A2	CAGE CODE 00779
2 PLC ± -	3 PLC ± .008	FINISH	DRAWING NO C=5222200	RESTRICTED TO
4 PLC ± -	ANGLES ± -	MATERIAL 1 THRU 7 THRU	WEIGHT -	SCALE 5:1
			CUSTOMER DRAWING	SHEET 1 OF 1
				REV 0

5222200