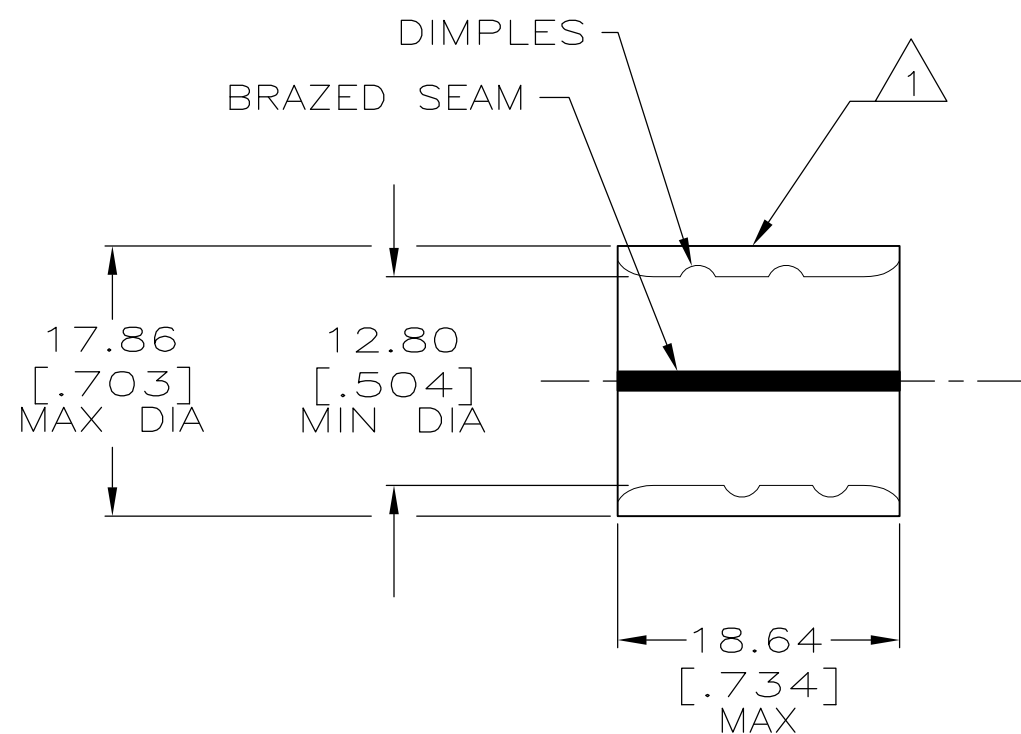


THIS DRAWING IS UNPUBLISHED. RELEASED FOR PUBLICATION
 © COPYRIGHT - By - ALL RIGHTS RESERVED.

LOC	DIST	REVISIONS					
		P	LTR	DESCRIPTION	DATE	DWN	APVD
G	14		H2	REVISED PER ECO-12-009692	23MAY12	KH	DR

AMP WIRE RANGE	Listed FILE E13288	LR7189 Certified
2/0 AWG SOLID OR STRANDED	2/0 AWG SOLID OR STRANDED	2/0 AWG SOLID OR STRANDED



- 1 STAMP AMP 2/0W* 125
LOCATE APPROX AS SHOWN
- 2 MATERIAL THK: 2.03^{±0.08} [.080^{±.003}]
- 3 TIN PL 0.00254 [.000100] MIN THK
PER ASTM B545.
- 4 NOTE DELETED
- 5 NOTE DELETED
- 6 STAMP FOR MANUFACTURING LOCATION OR
CODE PERMISSIBLE.
- 7 NOTE DELETED
- 8 NOT UL OR CSA LISTED
- 9 0.00254 [.000100] MIN TIN-LEAD (60-40)
PLATE PER SAE-AMS-P-81728
- 10 NOTE DELETED

FINISH	QTY	PACKAGING TYPE	PART NO.
9	50	LOOSE PIECE	8 36948-2
3	50	LOOSE PIECE	36948

AMP INCORPORATED
CUSTOMER SERVICE SYSTEMS

FOR ADDITIONAL PRODUCT INFORMATION OR COPIES OF DRAWINGS AND TECHNICAL DOCUMENTS
 PRODUCT INFORMATION CENTER
 1-800-522-6752

FOR APPLICATION TOOLING INFORMATION
 TOOLING ASSISTANCE CENTER
 1-800-722-1111

FOR ORDER ENTRY
 1-800-526-5142

MAX RECOMMENDED OPERATING TEMPERATURE:
 170°C [338°F]

VOLTAGE RATING:
 N/A

CIRCULAR MIL AREA:
 60.6-76.3mm² [119,500-150,000]
 SOLID OR STRANDED

THIS DRAWING IS A CONTROLLED DOCUMENT.

DIMENSIONS:
 mm [INCHES]

TOLERANCES UNLESS OTHERWISE SPECIFIED:

0 PLC	± -
1 PLC	± -
2 PLC	± 0.20 [.008]
3 PLC	± -
4 PLC	± -
ANGLES	± -

MATERIAL: COPPER PER ASTM B-152
 FINISH: SEE TABLE

DWN DK SCHRUM 5/24/93
 CHK RD HEIM 1/27/94
 APVD JL MECKLEY 1/27/94

STE TE Connectivity

NAME: SPLICE, PARALLEL, SOLISTRAND

SIZE: A3 CAGE CODE: 00779 DRAWING NO: C-36948 RESTRICTED TO: -

WEIGHT: -

CUSTOMER DRAWING SCALE: 2:1 SHEET: 1 OF 1 REV: H2