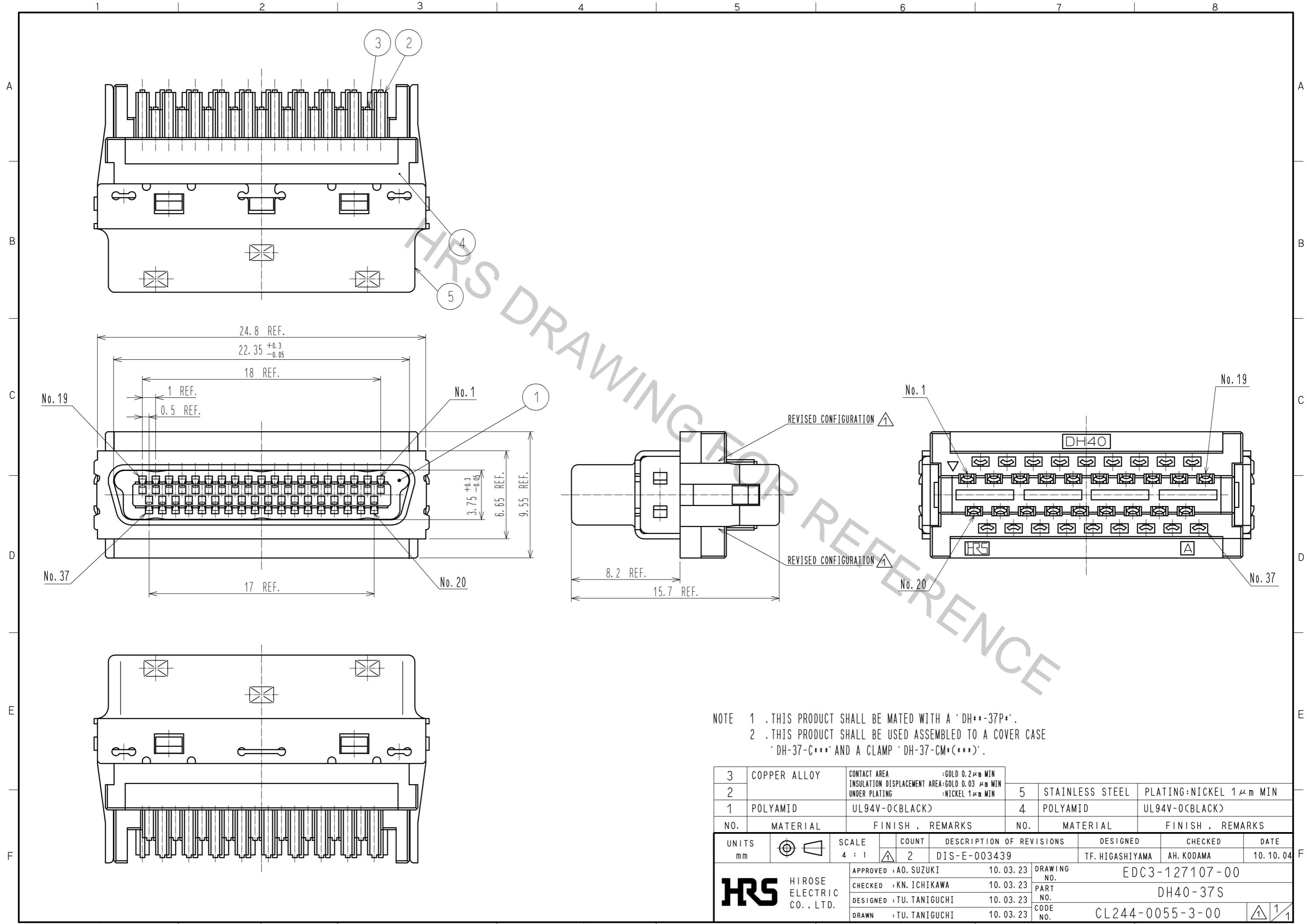


Apr.1.2017 Copyright 2017 HIROSE ELECTRIC CO., LTD. All Rights Reserved.



NOTE 1 .THIS PRODUCT SHALL BE MATED WITH A 'DH\*\*-37P\*'.  
 2 .THIS PRODUCT SHALL BE USED ASSEMBLED TO A COVER CASE 'DH-37-C\*\*\*' AND A CLAMP 'DH-37-CM\*(\*\*\*)'.

3	COPPER ALLOY	CONTACT AREA :GOLD 0.2μm MIN INSULATION DISPLACEMENT AREA:GOLD 0.03 μm MIN UNDER PLATING :NICKEL 1μm MIN	5	STAINLESS STEEL	PLATING:NICKEL 1μm MIN
2			4	POLYAMID	UL94V-0(BLACK)
1	POLYAMID	UL94V-0(BLACK)			
NO.	MATERIAL	FINISH . REMARKS	NO.	MATERIAL	FINISH . REMARKS
UNITS mm		SCALE 4 : 1	COUNT 2	DESCRIPTION OF REVISIONS DIS-E-003439	
DESIGNED TF. HIGASHIYAMA			CHECKED AH. KODAMA		
DATE 10.10.04			DRAWING NO. EDC3-127107-00		
APPROVED :A0. SUZUKI 10.03.23			PART NO. DH40-37S		
CHECKED :KN. ICHIKAWA 10.03.23			CODE NO. CL244-0055-3-00		
DESIGNED :TU. TANIGUCHI 10.03.23					
DRAWN :TU. TANIGUCHI 10.03.23					