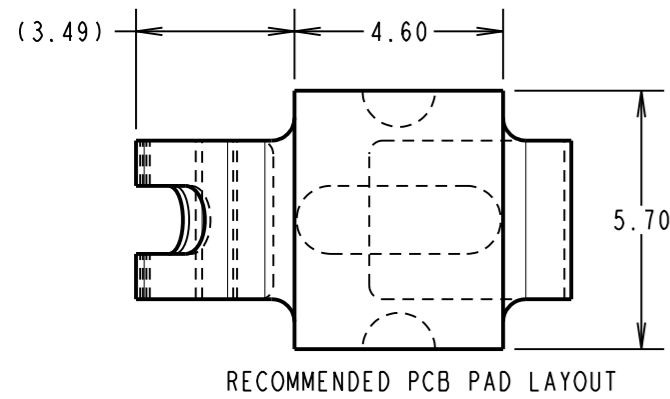


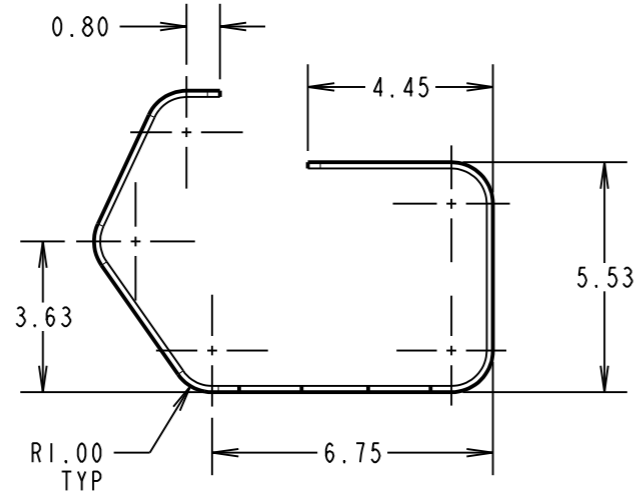
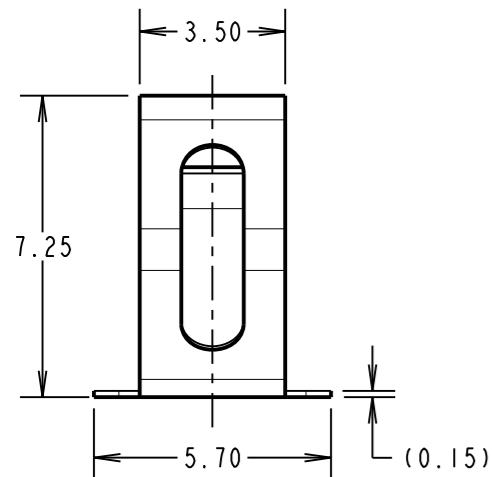
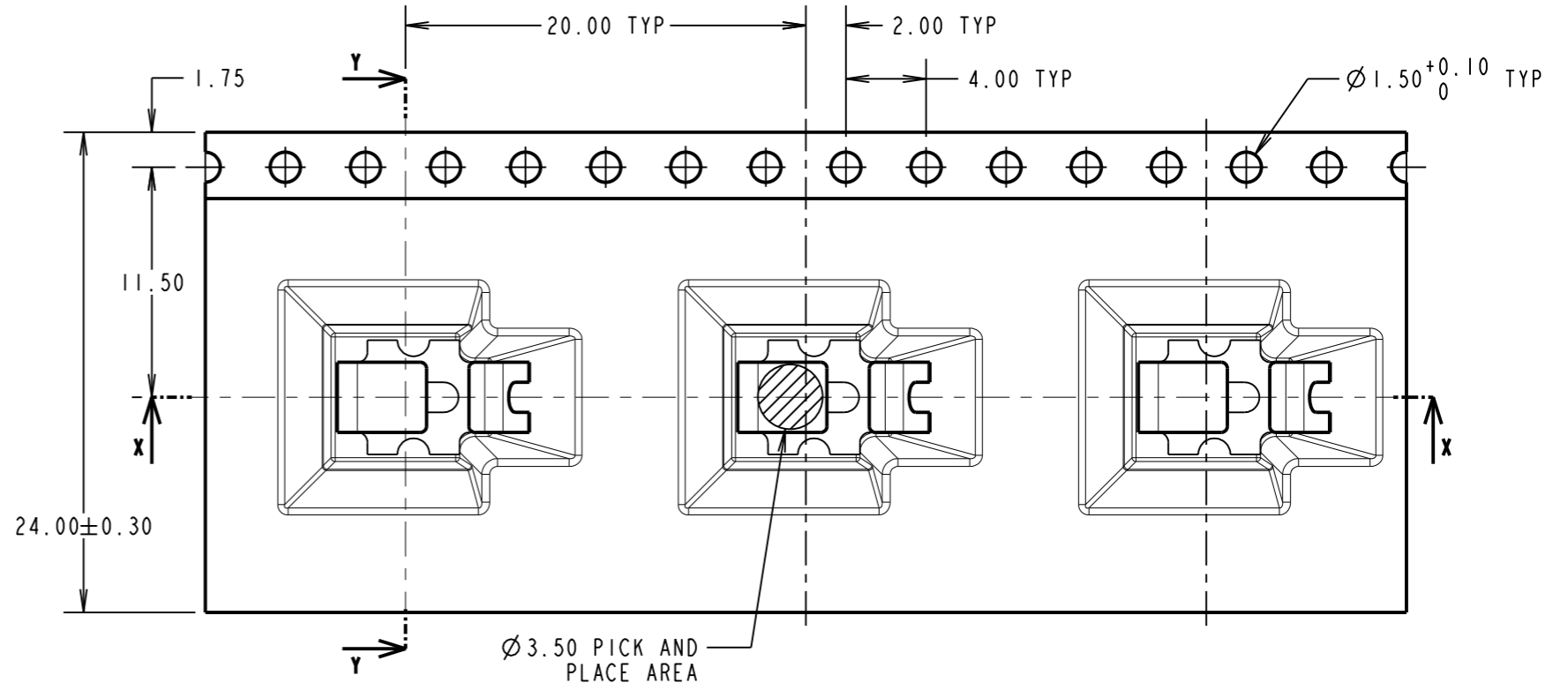
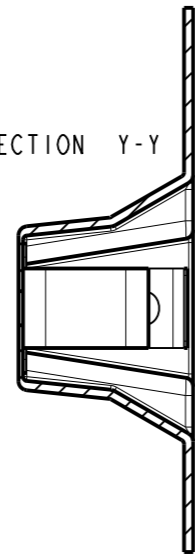
# Customer Information Sheet

DRAWING No.: S1951-46R SHEET 2 OF 3 IF IN DOUBT - ASK © NOT TO SCALE THIRD ANGLE PROJECTION ALL DIMENSIONS IN mm

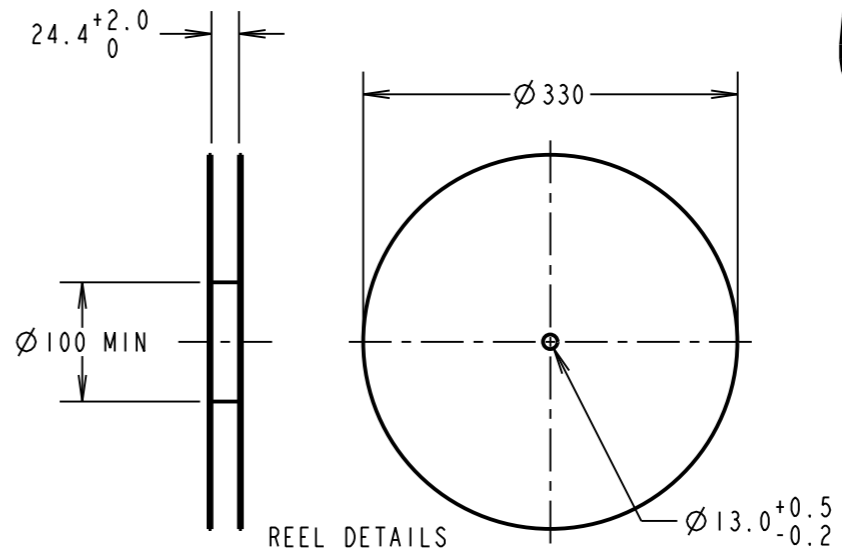
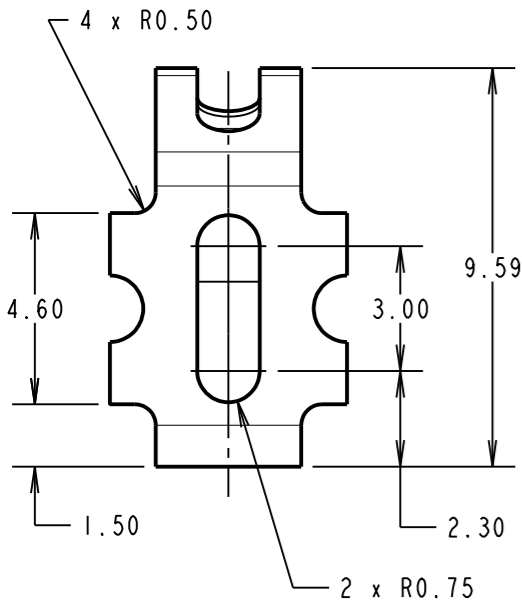
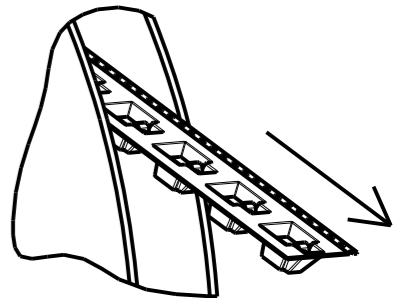
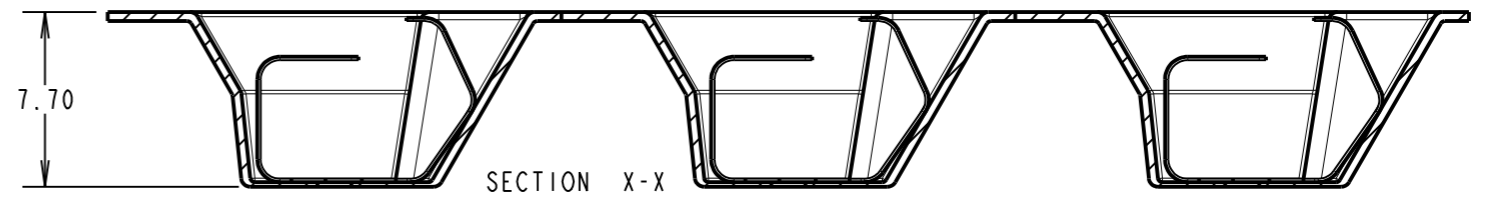
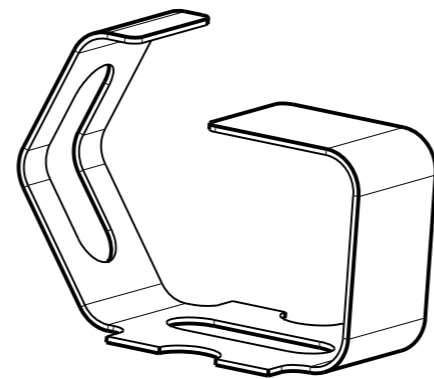


- NOTES:  
 1. QUANTITY OF COMPONENTS PER REEL = 350.  
 2. THIS PRODUCT IS TAPED AND REELED IN ACCORDANCE WITH EIA-481 (ELECTRONICS INDUSTRIES ASSOCIATION).

SECTION Y-Y



COMPONENT DETAILS



SB	5	18.08.16	13115
NAME	ISS.	DATE	C/NOTE
APPROVED:		S.BENNETT	
CHECKED:		M.PERREN	
DRAWN:		S.BENNETT	
CUSTOMER REF.:			
ASSEMBLY DRG:			

**HARWIN**

www.harwin.com  
 technical@harwin.com

THIS DRAWING AND ANY INFORMATION OR DESCRIPTIVE MATTER SET OUT HEREON ARE CONFIDENTIAL AND COPYRIGHT PROPERTY OF THE HARWIN GROUP AND MUST NOT BE DISCLOSED, LOANED, COPIED OR USED FOR MANUFACTURING, TENDERING OR FOR ANY OTHER PURPOSE WITHOUT THEIR WRITTEN PERMISSION.

TOLERANCES  
 X. = ±1mm  
 X.X = ±0.50mm  
 X.XX = ±0.10mm  
 X.XXX = ±0.01mm  
 ANGLES = ±5°  
 UNLESS STATED

MATERIAL: SEE ABOVE  
 FINISH: SEE ABOVE  
 S/AREA: mm<sup>2</sup>

TITLE:  
 MULTI-DIRECTIONAL SHIELD FINGER  
 IN TAPE AND REEL

DRAWING NUMBER:  
**S1951-46R**

SHT  
 2 OF  
 3

# Customer Information Sheet

DRAWING No.: S1951-46R

SHEET 3 OF 3

IF IN DOUBT - ASK

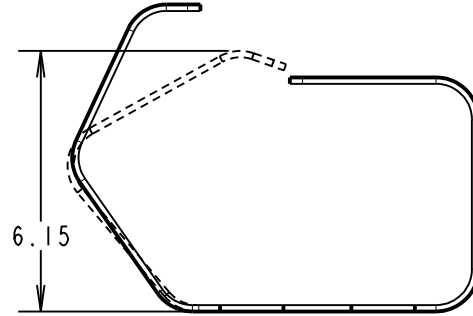
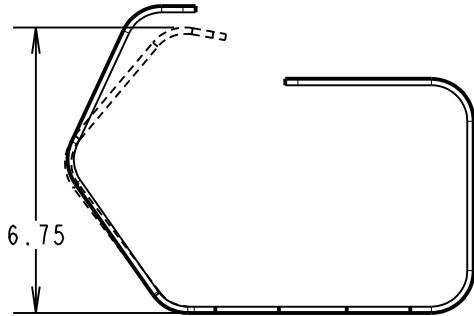


NOT TO SCALE

THIRD ANGLE PROJECTION

ALL DIMENSIONS IN mm

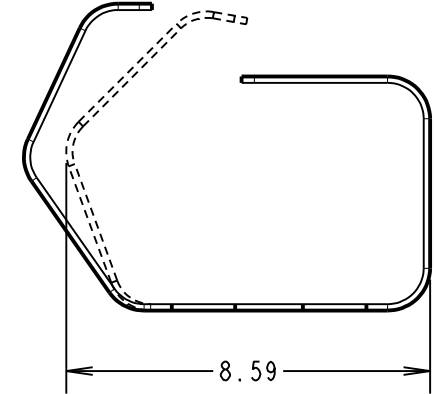
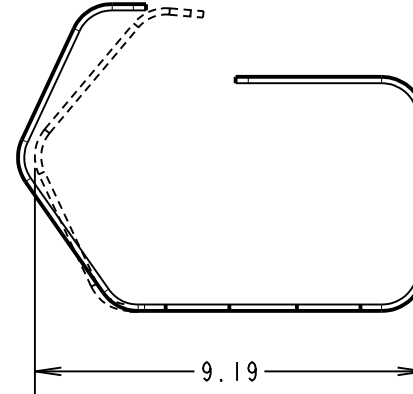
**S1951-46R  
DEFLECTION FROM ABOVE**



RECOMMENDED WORKING HEIGHT  
OF 6.75mm = 0.50mm DEFLECTION,  
MINIMUM FORCE OF 1.2N

MINIMUM RECOMMENDED HEIGHT  
OF 6.15mm = 1.10mm DEFLECTION

**S1951-46R  
DEFLECTION FROM FRONT**



RECOMMENDED WORKING LENGTH  
OF 9.19mm = 0.40mm DEFLECTION  
MINIMUM FORCE OF 1.2N

MINIMUM RECOMMENDED LENGTH  
OF 8.59mm = 1.00mm DEFLECTION

COMPONENT SPECIFICATION:  
MATERIAL = BERYLLIUM COPPER  
FINISH = 3 $\mu$  100% TIN OVER 2 $\mu$  NICKEL  
ELECTRICAL:  
CURRENT RATING = 7A MAX  
CONTACT RESISTANCE = 20m $\Omega$  MAX  
MECHANICAL:  
DURABILITY = 5000 CYCLES

SB	5	18.08.16	13115
NAME	ISS.	DATE	C/NOTE
APPROVED:		S.BENNETT	
CHECKED:		M.PERREN	
DRAWN:		S.BENNETT	
CUSTOMER REF.:			
ASSEMBLY DRG:			

## HARWIN

www.harwin.com  
technical@harwin.com

THIS DRAWING AND ANY  
INFORMATION OR DESCRIPTIVE  
MATTER SET OUT HEREON ARE  
CONFIDENTIAL AND COPYRIGHT  
PROPERTY OF THE HARWIN  
GROUP AND MUST NOT BE  
DISCLOSED, LOANED, COPIED  
OR USED FOR MANUFACTURING,  
TENDERING OR FOR ANY  
OTHER PURPOSE WITHOUT  
THEIR WRITTEN PERMISSION.

TOLERANCES  
X. =  $\pm 1$ mm  
X.X =  $\pm 0.50$ mm  
X.XX =  $\pm 0.10$ mm  
X.XXX =  $\pm 0.01$ mm  
ANGLES =  $\pm 5^\circ$   
UNLESS STATED

MATERIAL:  
SEE ABOVE

FINISH: SEE ABOVE  
S/AREA: mm<sup>2</sup>

TITLE:  
MULTI-DIRECTIONAL SHIELD FINGER  
IN TAPE AND REEL

DRAWING NUMBER:  
**S1951-46R**

SHT  
3  
OF  
3