

# High Frequency Ceramic Solutions

## 2.4 GHz Impedance-Matched Integrated RF Front End Passive Balun Filter P/N 2450BM14E0007 for ADF7241 and AADF7242

Detail Specification: 8/30/2012

Page 1 of 3

### General Specifications

Part Number	2450BM14E0007
Frequency (MHz)	2400 - 2500
Unbalanced Impedance (Antenna Out)	50 $\Omega$
Balanced Differential Impedance	Conjugate match to ADI ADF7241 and ADF7242
Attenuation (dB)	25min.@4800~5000MHz 25min.@7200~7500MHz
Power Capacity	2W max.

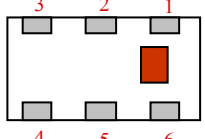
Insertion Loss	1.5 dB max.
Return Loss	9.5 dB min.
Phase Difference	180° $\pm$ 10°
Amplitude Difference	2.0 dB max.
Reel Quantity	4,000
Operating Temperature	-40 to +85°C
Recommended Storage Conditions	+5 to +35°C, Humidity: 45-75%RH, 18 mos. Max *

\*18 months in vacuum sealed bag and 1 week cumulative after opened. For more info go to [www.johansontechnology.com/silverleads](http://www.johansontechnology.com/silverleads)

P/N Suffix	Packaging Style	Bulk	Suffix = S	Eg. 2450BM14E0007S
		T & R (Paper)	Suffix = E	Eg. 2450BM14E0007T
	Termination Style	AgPt	Suffix = None	Eg. 2450BM14E0007(S or T)

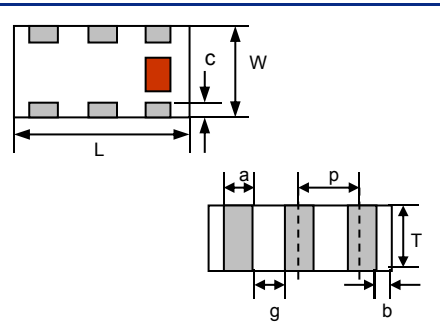
### Terminal Configuration

No.	Function
1	Unbalanced Port
2	GND
3	Balanced Port
4	Balanced Port
5	GND
6	GND



### Mechanical Dimensions

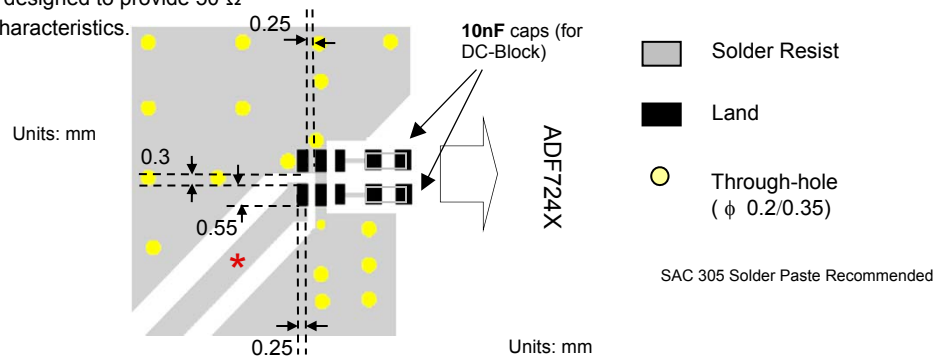
	In	mm
L	0.063 $\pm$ 0.004	1.60 $\pm$ 0.10
W	0.031 $\pm$ 0.004	0.80 $\pm$ 0.10
T	0.024 $\pm$ 0.004	0.60 $\pm$ 0.10
a	0.008 $\pm$ 0.004	0.20 $\pm$ 0.10
b	0.008 +.004/-0.006	0.20 +0.1/-0.15
c	0.006 $\pm$ 0.004	0.15 $\pm$ 0.10
g	0.012 $\pm$ 0.004	0.30 $\pm$ 0.10
p	0.020 $\pm$ 0.002	0.50 $\pm$ 0.05



### Mounting Considerations

Mount these devices with brown mark facing up.

\* Line width should be designed to provide 50  $\Omega$  impedance matching characteristics.



Johanson Technology, Inc. reserves the right to make design changes without notice.  
All sales are subject to Johanson Technology, Inc. terms and conditions.



# High Frequency Ceramic Solutions

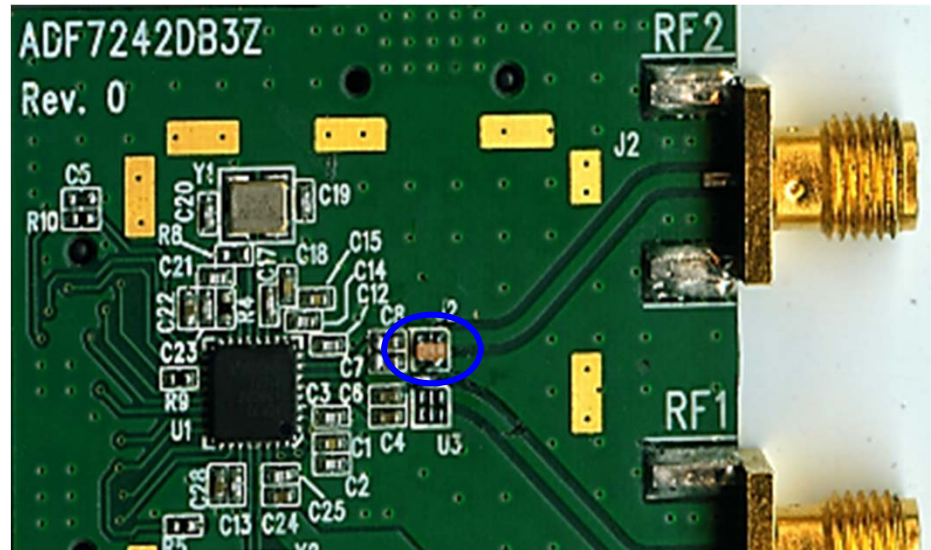
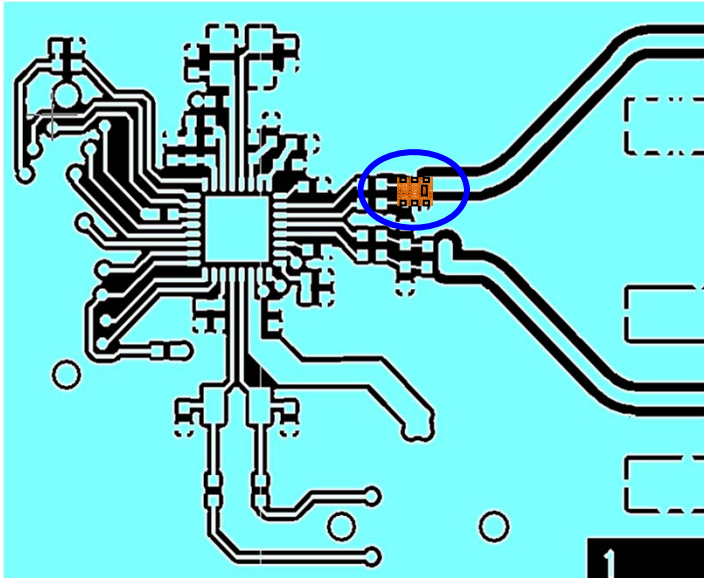
2.4 GHz Impedance-Matched Integrated RF Front End Passive Balun Filter  
for ADF7241 and AADF7242

P/N 2450BM14E0007

Detail Specification: 8/30/2012

Page 2 of 3

## Layout Details



Johanson Technology, Inc. reserves the right to make design changes without notice.  
All sales are subject to Johanson Technology, Inc. terms and conditions.



[www.johansontechnology.com](http://www.johansontechnology.com)

4001 Calle Tecate • Camarillo, CA 93012 • TEL 805.389.1166 FAX 805.389.1821

2012 Johanson Technology, Inc. All Rights Reserved

# High Frequency Ceramic Solutions

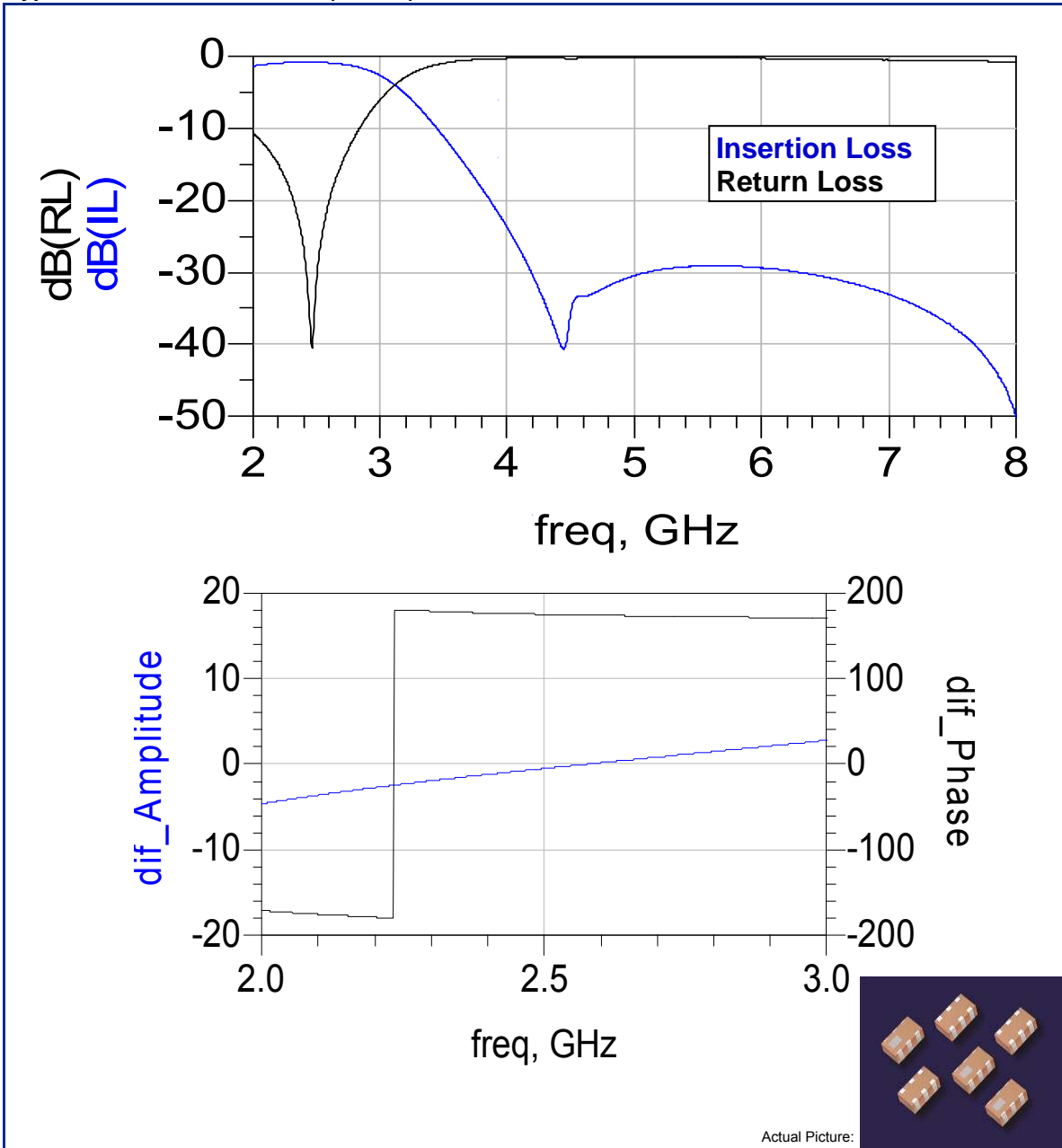
2.4 GHz Impedance-Matched Integrated RF Front End Passive Balun Filter  
for ADF7241 and AADF7242

P/N 2450BM14E0007

Detail Specification: 8/30/2012

Page 3 of 3

## Typical Electrical Performance (T=25°C)



Johanson Technology, Inc. reserves the right to make design changes without notice.  
All sales are subject to Johanson Technology, Inc. terms and conditions.



[www.johansontechnology.com](http://www.johansontechnology.com)

4001 Calle Tecate • Camarillo, CA 93012 • TEL 805.389.1166 FAX 805.389.1821

2012 Johanson Technology, Inc. All Rights Reserved